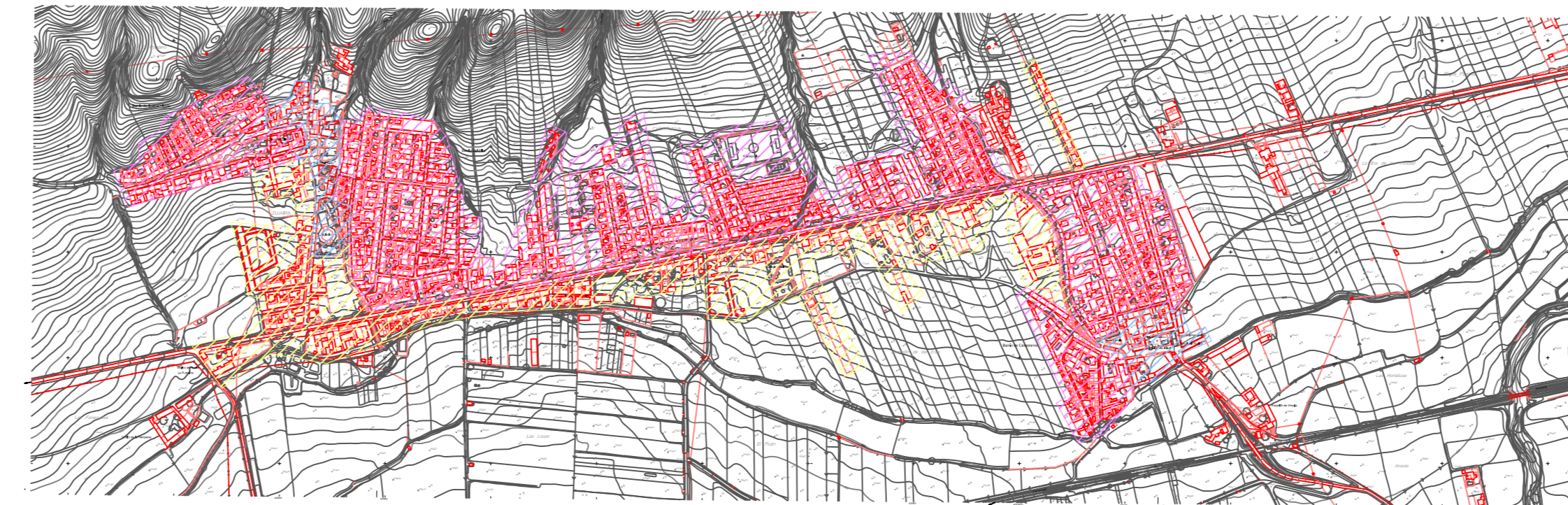
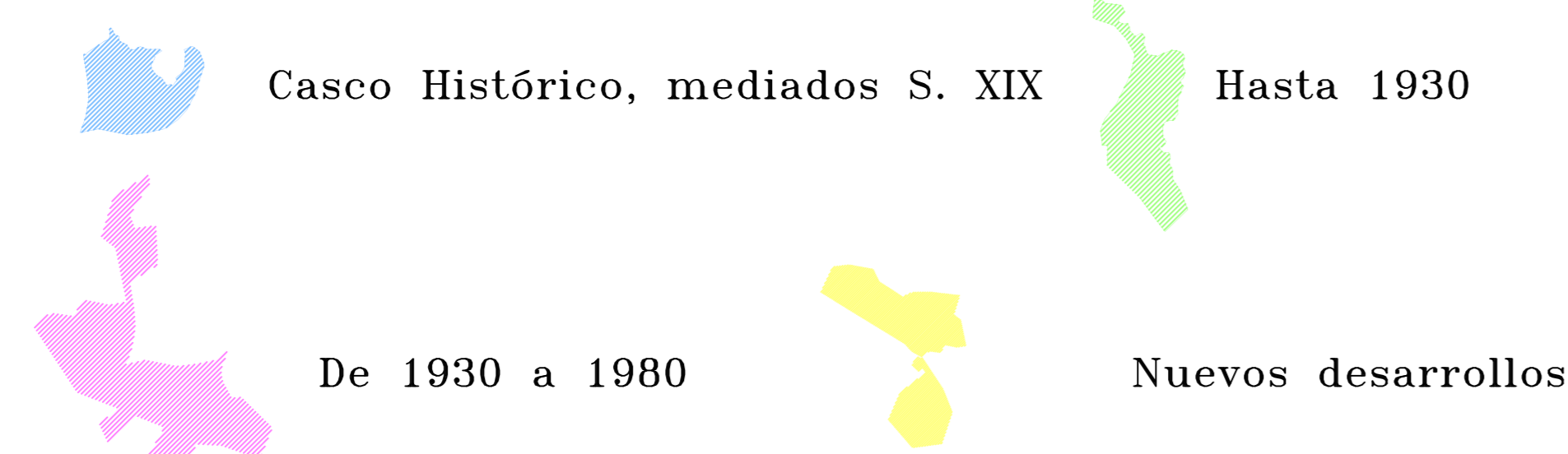
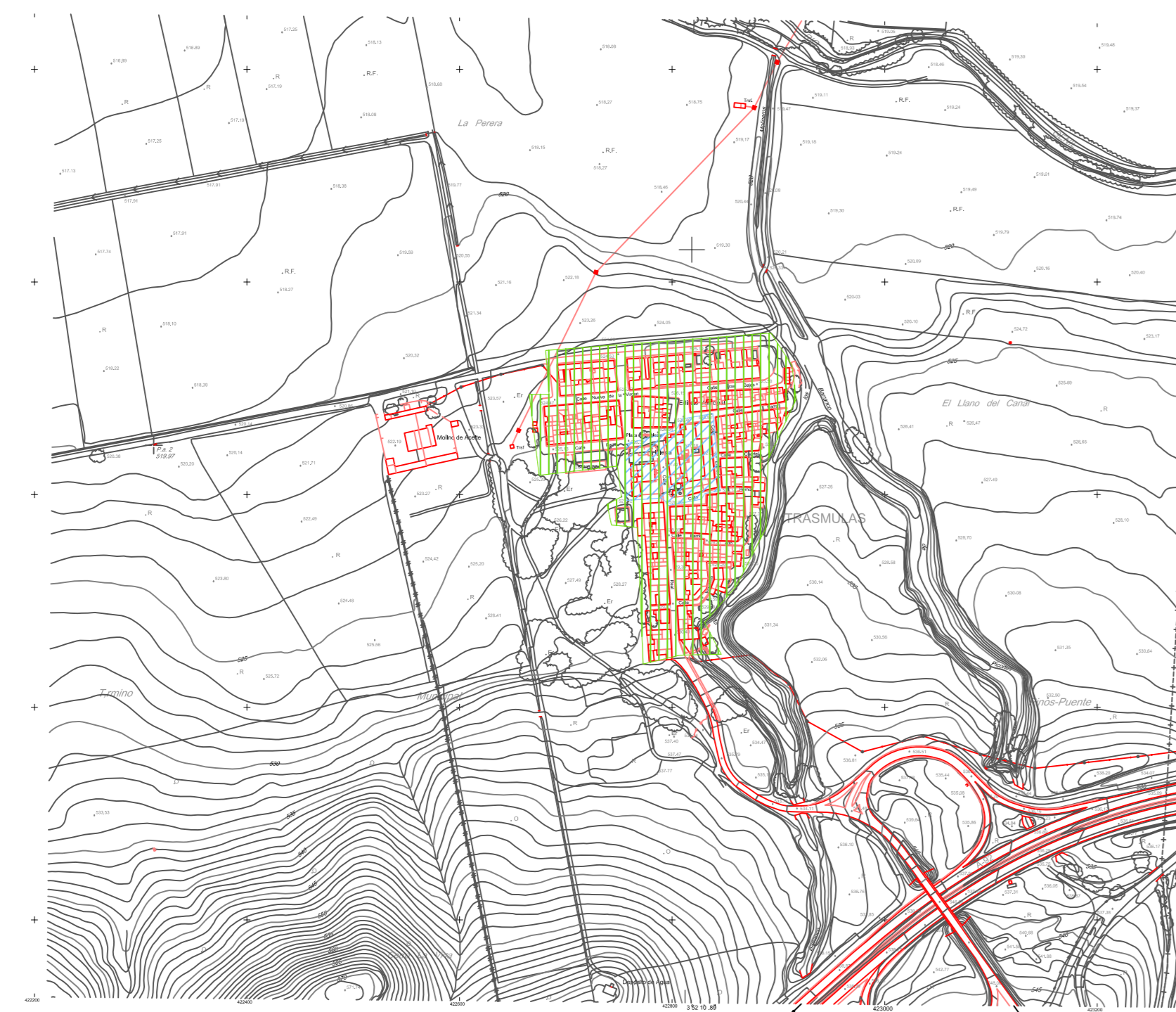
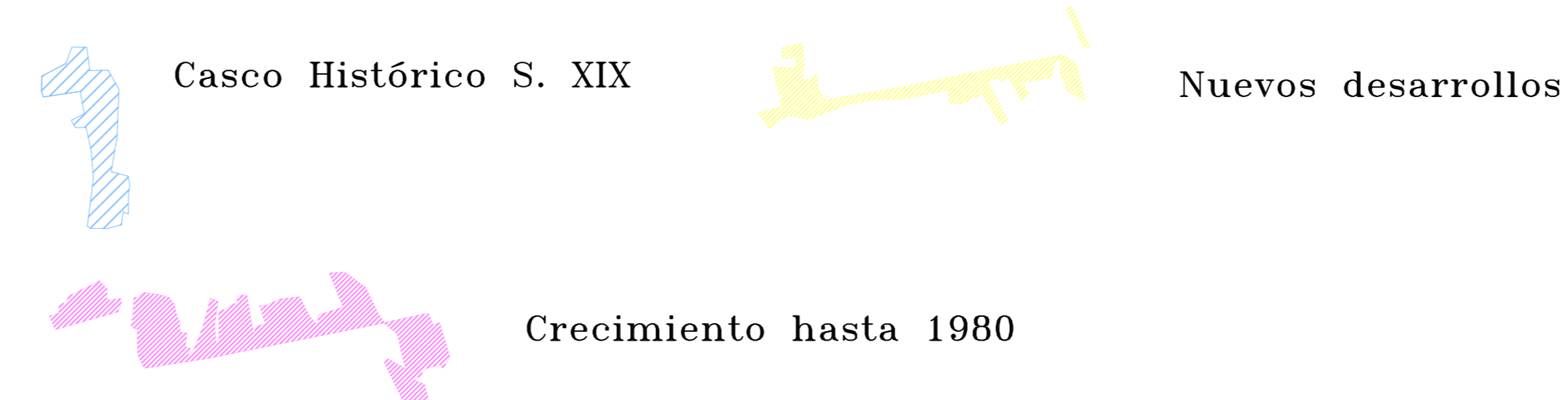


1/10.000

PINOS PUENTE casco urbano

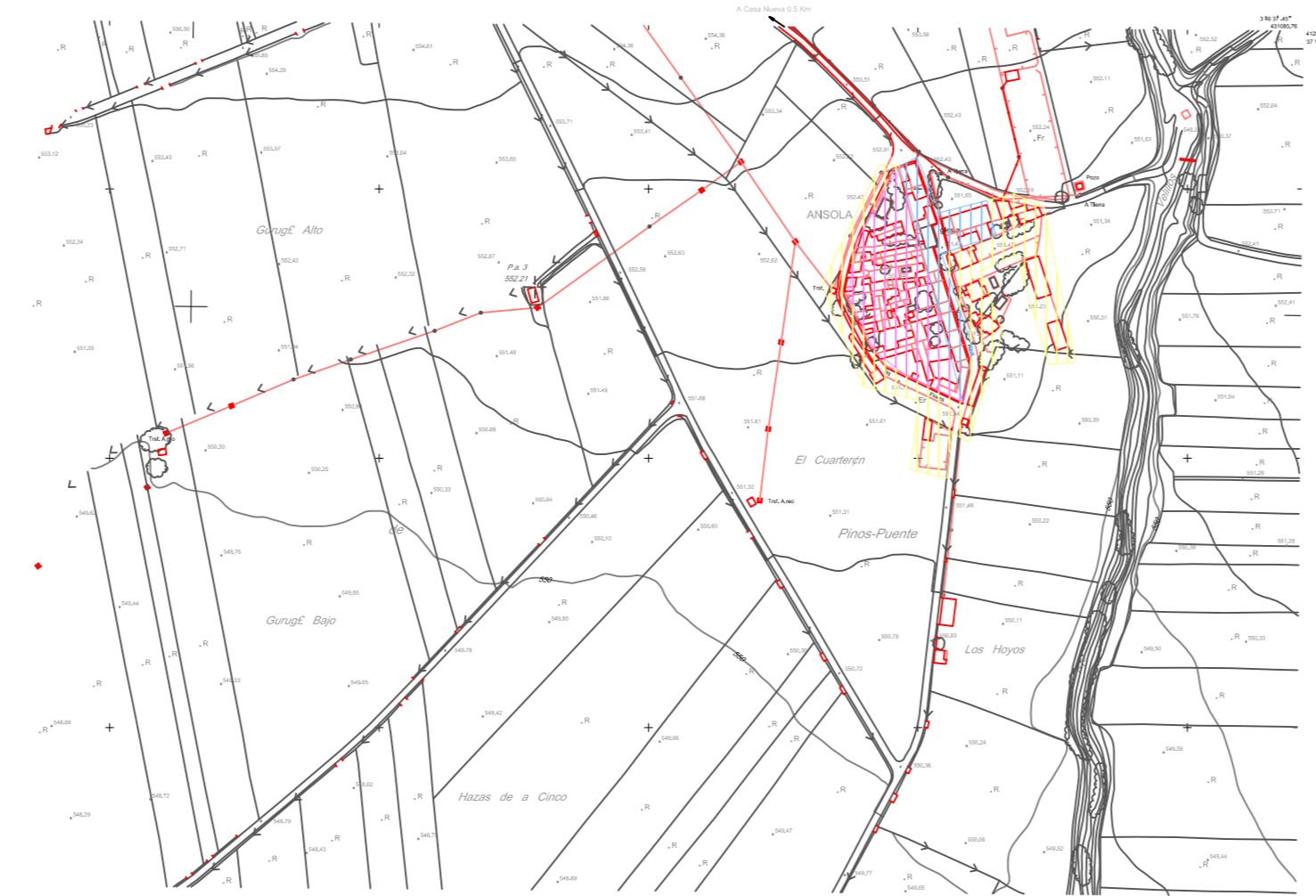
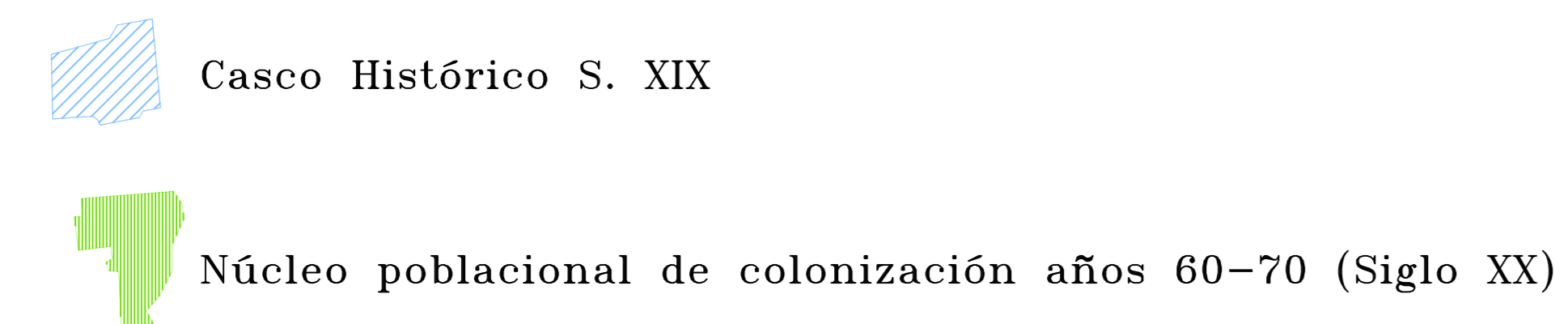


ZUJAIRA - CASA NUEVA casco urbano

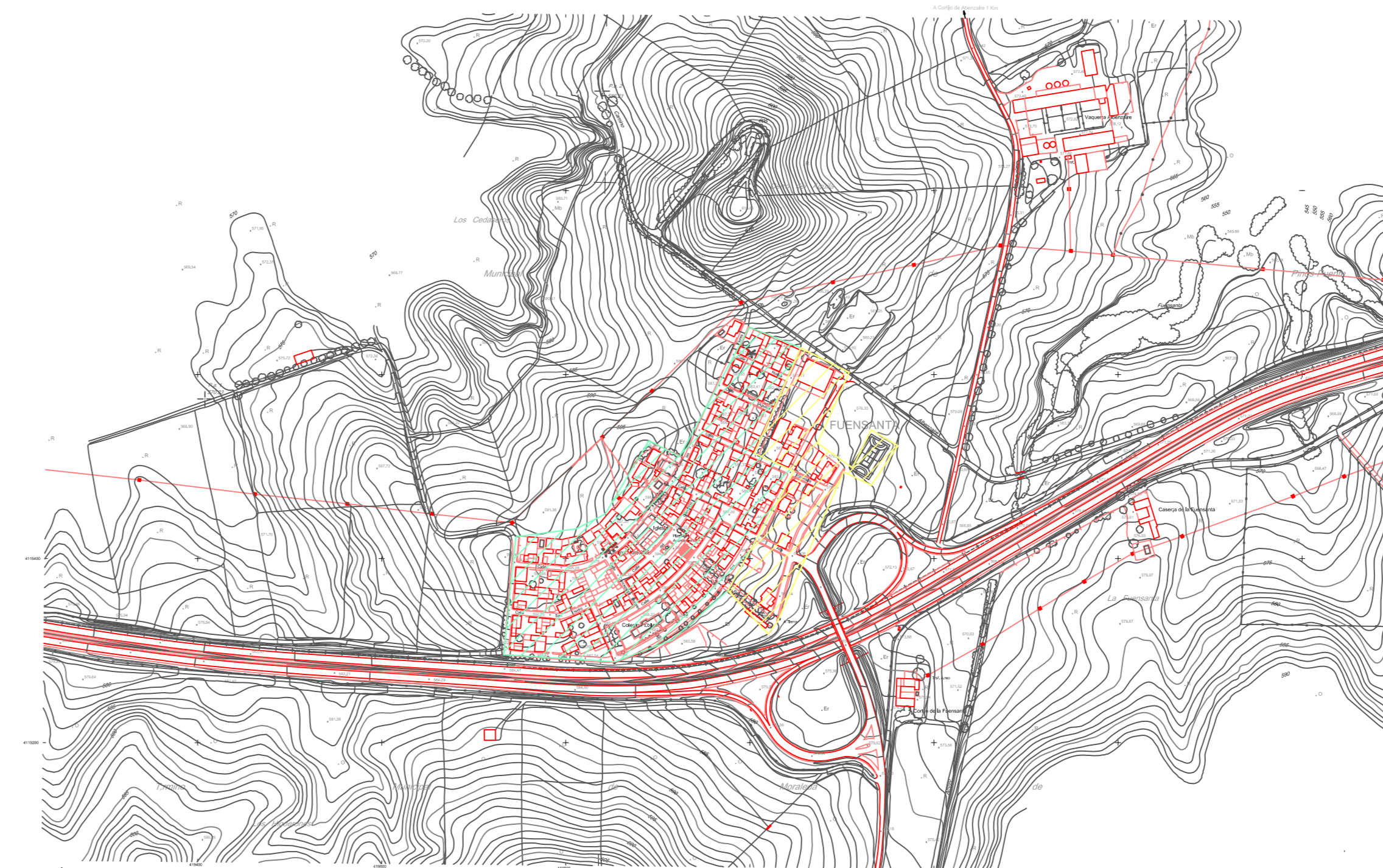
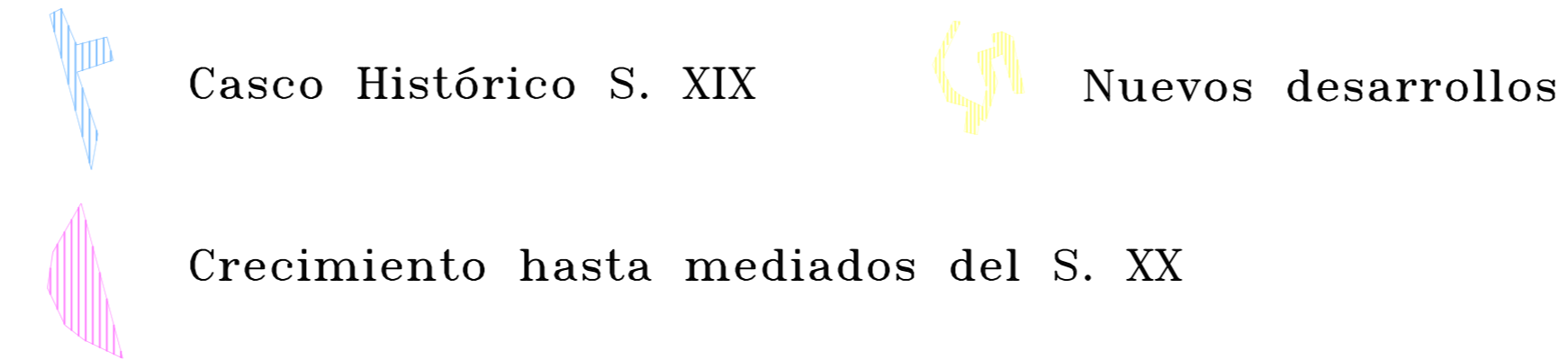


1/5.000

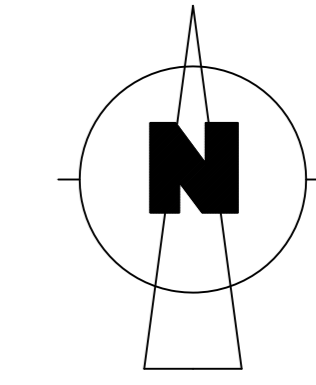
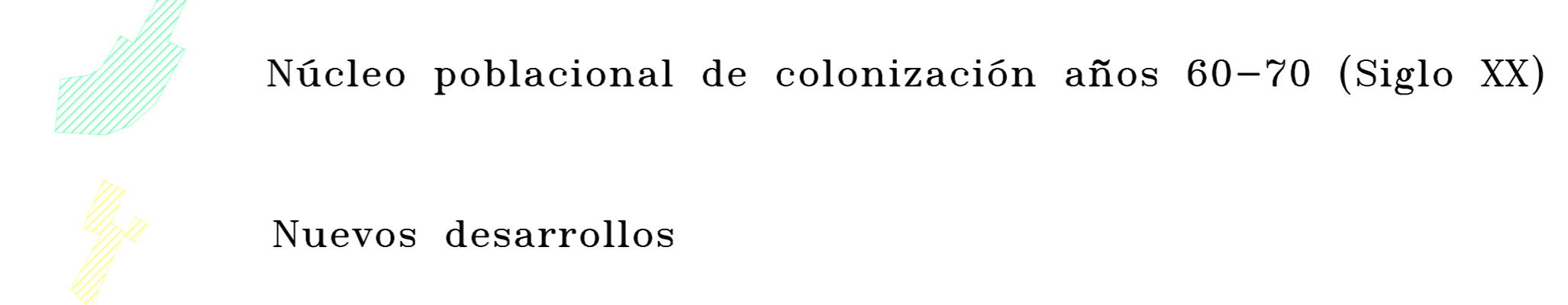
TRASMULAS casco urbano



ANSOLA casco urbano



FUENSANTA casco urbano



AYUNTAMIENTO DE PINOS PUENTE

Plan General de Ordenación Urbanística de PINOS PUENTE

EQUIPO REDACTOR:

EUFRASIO A. JERONIMO.....Arquitecto
 ASTURIO ABEL.....Arquitecto
 ANTONIO GARCIA.....Biólogo
 JOSÉ MARIA MARTOS.....Abogado
 ANGEL RODRIGUEZ.....Arquitecto
 ANTONIO SERRIENO.....Delineante

PLANO:

DESARROLLO HISTÓRICO

DOCUMENTO:
 INF. URBANÍSTICA (ACTUALIZADA)

FECHA:
 Diciembre 2.016

ESCALA:
 1/10.000
 1/5.000

NÚMERO:
 1.12